

SYM	QTY	SIZE	LOCATION, DIRECTION	LENGTH	WGT
ST1	26	#6	FOOTERS, LATERAL	12'-2	476
ST2	22	#5	APPROACHES, LATERAL	12'-2	280
ST3	26	#5	APPROACHES, LONG.	9'-6	258
L1	26	#5	APPROACH TO FOOTER	2'-0x2'-0	109
TOTAL					1123

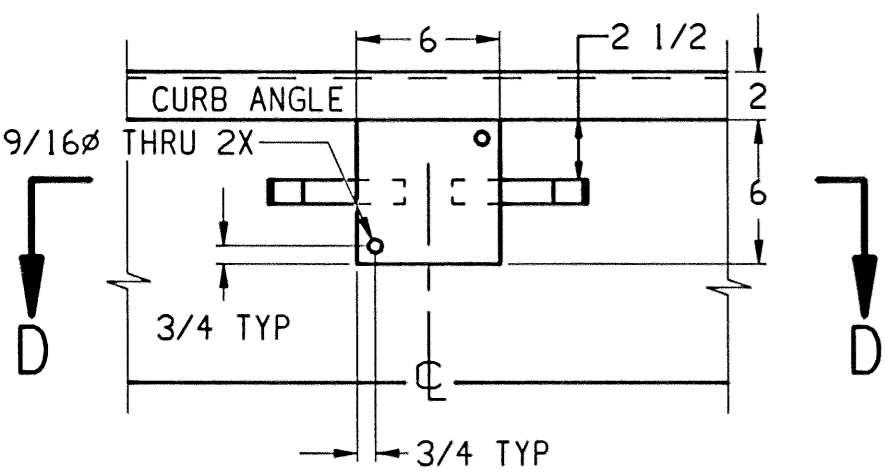
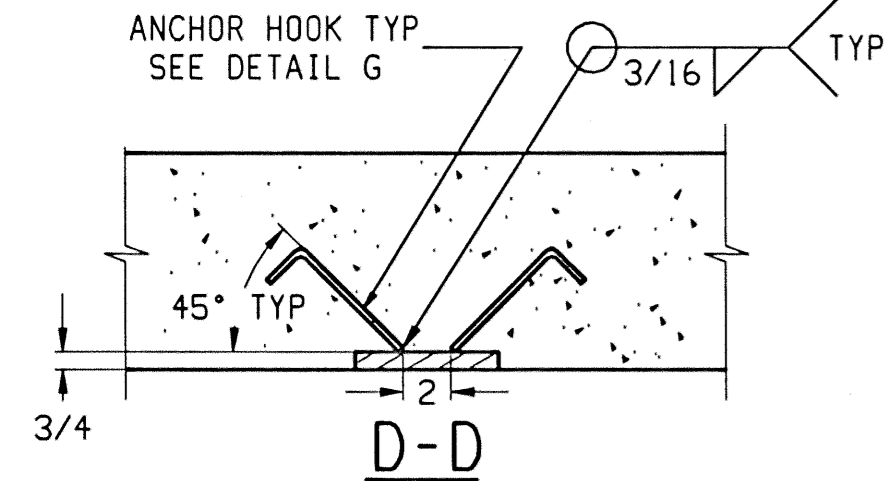
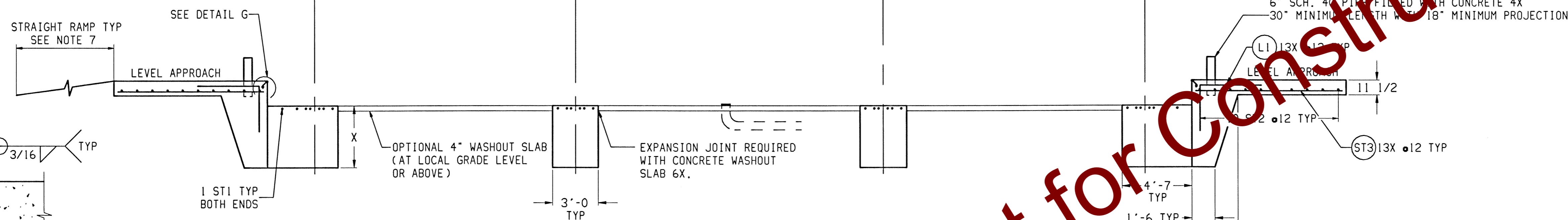
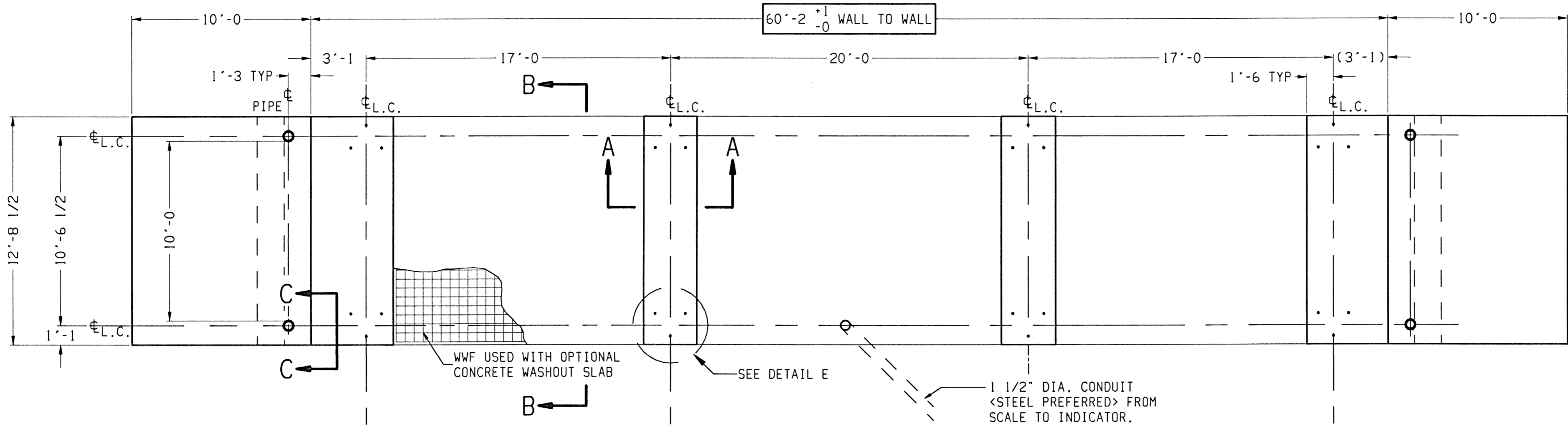
MATERIAL SUMMARY *	FOOTER DEPTH: "X" INCHES (24 INCH MINIMUM)				
	24	36	48	60	72
FOOTERS AND APPROACHES ONLY					
CONCRETE (CU. YD.)	29	39	48	57	66
REINFORCING STEEL (LB)	1123				

FOR OPTIONAL 4" CONCRETE WASHOUT SLAB ADD:
WWF 6x6xW1.4xW1.4 - 575 SQ. FT.
CONCRETE - 7 CU. YD.
1/2" EXPANSION JOINT - 80 FT.

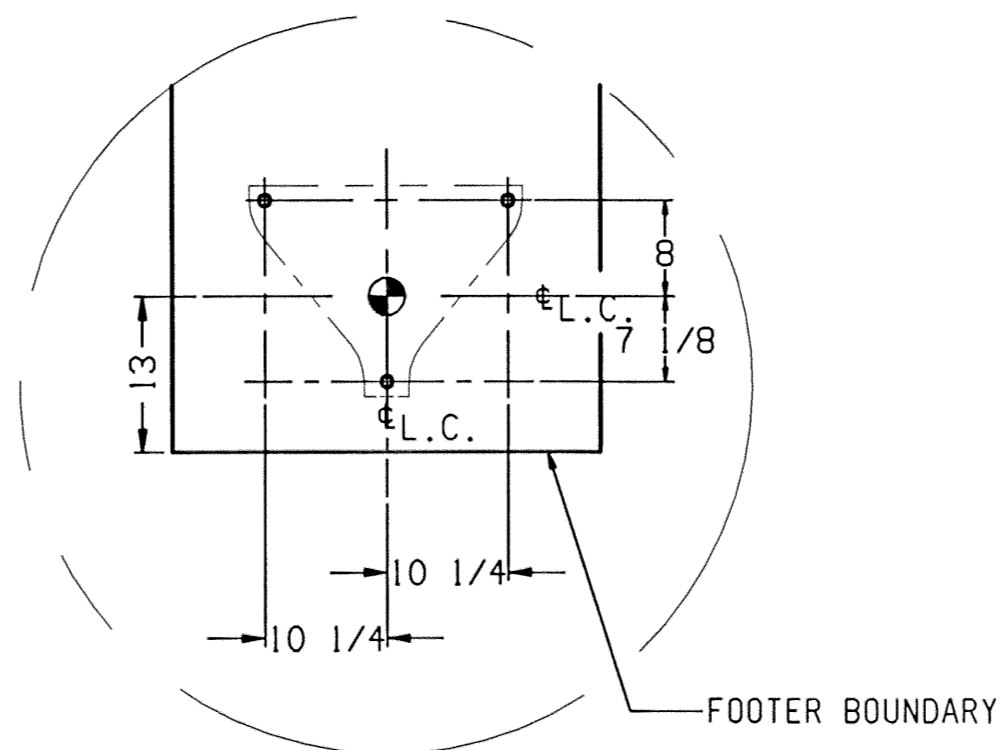
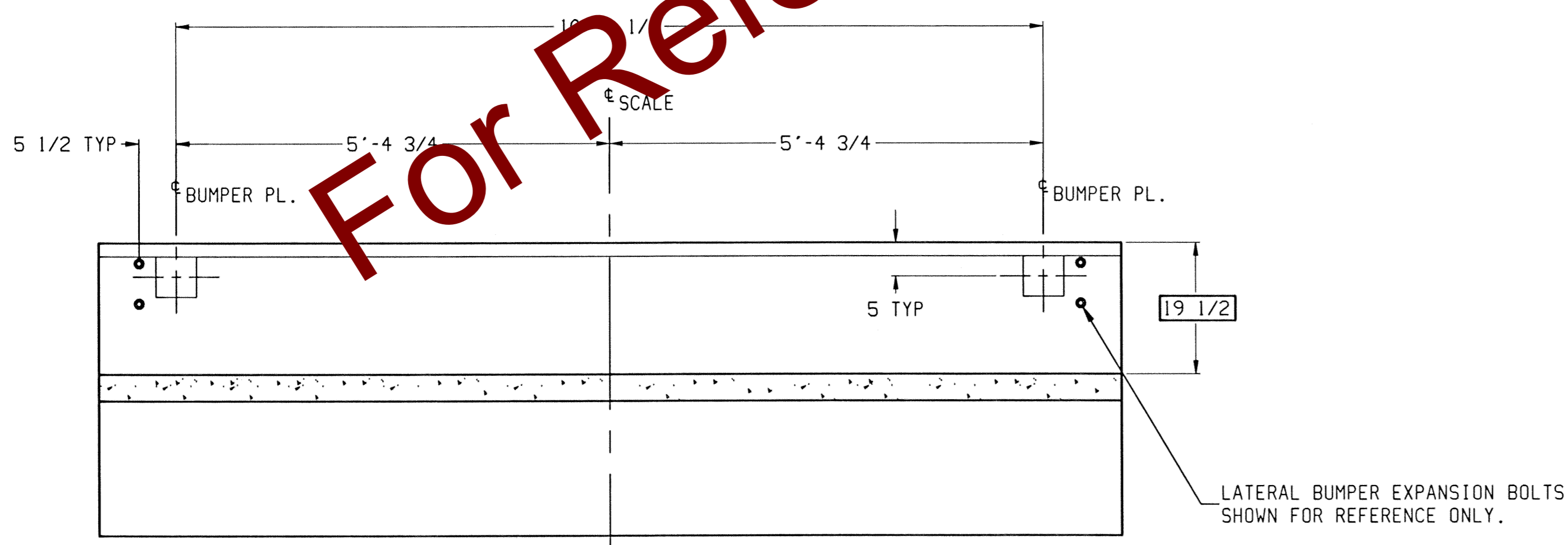
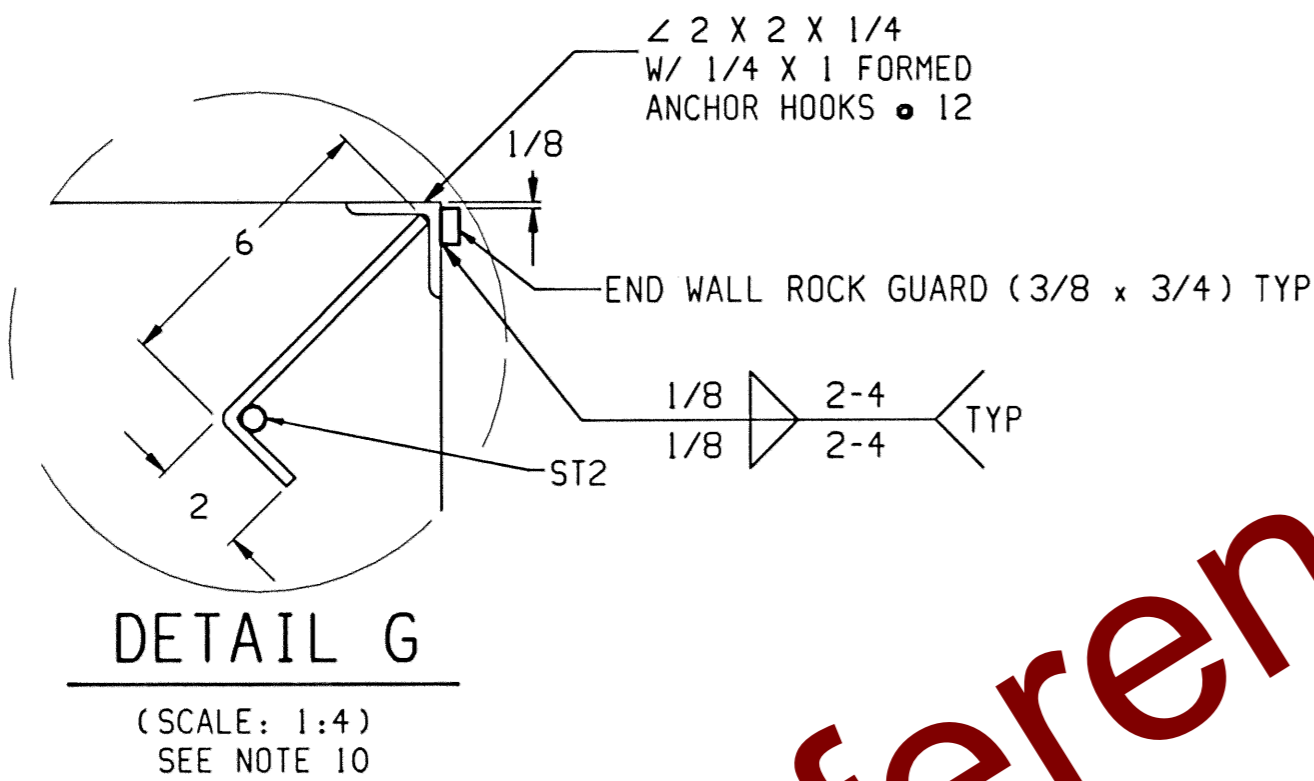
* REFER TO SCALE GENERAL LAYOUT DRAWING FOR
DECK CONCRETE AND REINFORCING STEEL SPECIFICATIONS.

NOTES:

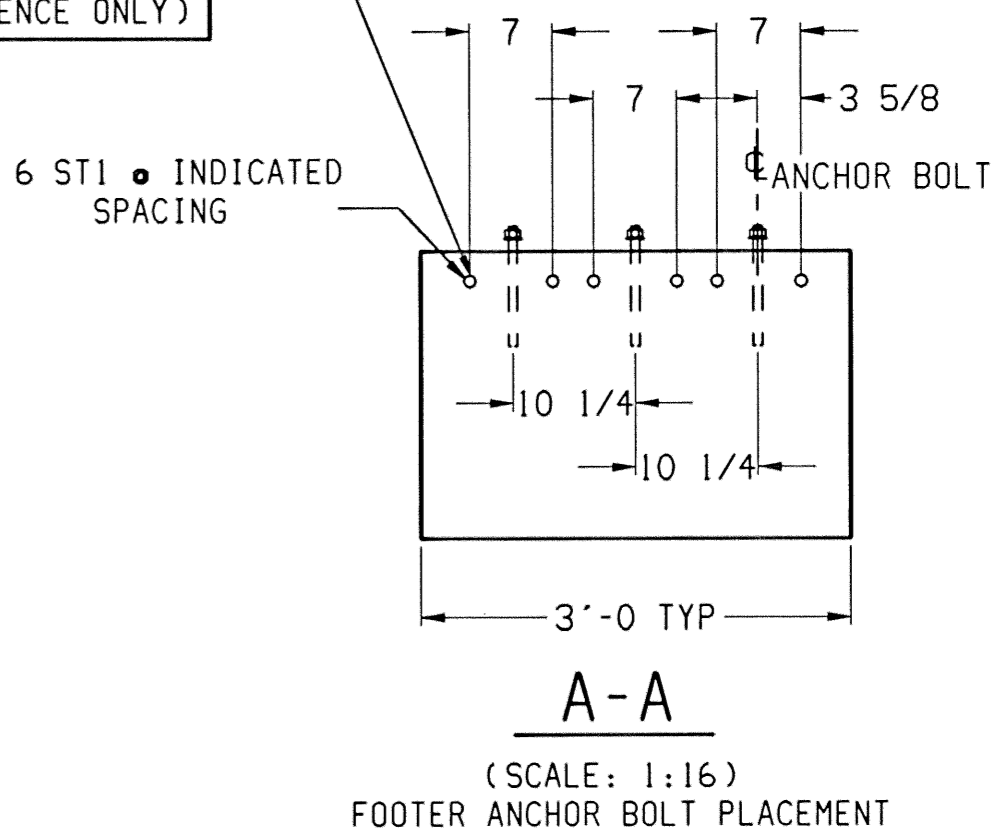
- 1) USE MINIMUM 3000 PSI STRENGTH CONCRETE AT 28 DAYS WITH 5-7% AIR ENTRAINMENT.
- 2) USE MINIMUM 60KSI YIELD DEFORMED REINFORCING STEEL.
- 3) FOUNDATION REQUIRES 2500 PSF RATED SOIL.
- 4) TOP OF CONCRETE AT BASEPLATE LOCATIONS TO BE LEVEL AND IN ONE PLANE $\pm 1/8"$.
- 5) DIAGONAL MEASUREMENTS, ENDWALL TO ENDWALL, MUST BE EQUAL WITHIN $1/2"$.
- 6) BASEPLATE AND LATERAL BUMPER ANCHORS SUPPLIED BY METTLER TOLEDO. USE BASEPLATES AND LATERAL BUMPER AS TEMPLATES TO LOCATE EXPANSION BOLTS DURING SCALE INSTALLATION.
- 7) RAMP LENGTH: -PER LOCAL REGULATIONS
-1/2" SLOPE PER FOOT TYPICAL
- 8) OPTIONAL: 6" OF GRAVEL MAY BE USED UNDER APPROACHES TO IMPROVE DRAINAGE.
- 9) MINIMUM DEPTH OF COVER FROM THE SURFACE FOR REBAR IS 2". HOWEVER IN PLACES WHERE THE SURFACE IS IN CONTACT WITH THE GROUND, THE REBAR COVER SHOULD BE 3".
- 10) CONTRACTOR SUPPLIES:
 - EXCAVATION
 - CONCRETE AND FORMS
 - REINFORCING STEEL
 - 1 1/2" DIA CONDUIT
 - CURB ANGLE ASSEMBLIES (DETAIL G)
 - BUMPER PLATE ASSEMBLIES (VIEWS C-C & D-D)
 - END WALL ROCK GUARD (DETAIL G)
 - 6" SCH. 40 PIPE.



(SCALE: 1:8)
BUMPER PLATE ASSY'S: TWO EACH END
MATERIAL: H.R. STEEL
SEE NOTE 10



SPACE REBAR TO AVOID EXPANSION BOLTS: TYPICAL ALL BASEPLATE AND LATERAL BUMPER LOCATIONS. (BOLTS SHOWN FOR REFERENCE ONLY)



REV	CHANGE	BY	DATE	SCALE	1/50	METTLER TOLEDO
A	EXTENDED FTR AND SLAB TO APPROACH WIDTH	JEB	10/1/98	DATE	9/15/98	
				DRN JEB	APPO 3/8	
				TITLE 7531KD FOUNDATION VARIABLE FOOTER 60'x10'		
				UNLESS OTHERWISE SPECIFIED, ALL DIMENSIONS ARE IN INCHES, AND DIMENSIONAL TOLERANCES ARE:		THIS PRINT IS FURNISHED WITH THE UNDERSTANDING THAT THE ESSENCE THEREOF WILL NOT BE REPRODUCED IN WHOLE OR IN PART WITHOUT WRITTEN AUTHORIZATION OF METTLER-TOLEDO, INC. ALL DESIGNS ARE THE PROPERTY OF METTLER-TOLEDO, INC. AND WILL BE PROTECTED BY PATENTS.
				FRACTIONAL	DECIMAL	
				1/32	.005	ANGULAR
						*.5°
						TC203640
						REV A